

THIS DOCUMENT CONTAINS PROPRIETARY INFORMATION AND IS SUBMITTED IN CONFIDENCE. THIS DOCUMENT IS SUBJECT TO RETURN UPON REQUEST. THE INFORMATION CONTAINED HEREIN IS NOT BE USED IN ANY WAY DERIMENTAL TO THE INTERESTS OF HYPower.

NOTE: PIN HOLE CLEARANCE MACHINED TO SUIT ANSI B4.2 D9/h9

PORT THREADS MACHINED TO ISO11926-1 OTHER THREADS MACHINED TO CLASS 2A/B
GENERAL DIMENSIONS SUIT ISO2768-mK UNLESS OTHERWISE STATED
GENERAL SURFACE MACHINING TO ISO1302
FORCE CALCULATIONS ARE THEORETICAL MAXIMUM. ALLOW UP TO 20% FOR LOSSES
ROD MOUNTING CONDITIONS AFFECT ROD BUCKLING SAFETY FACTOR

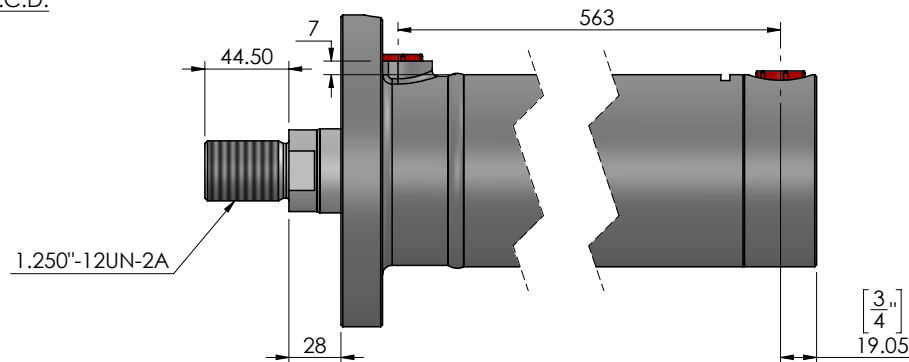
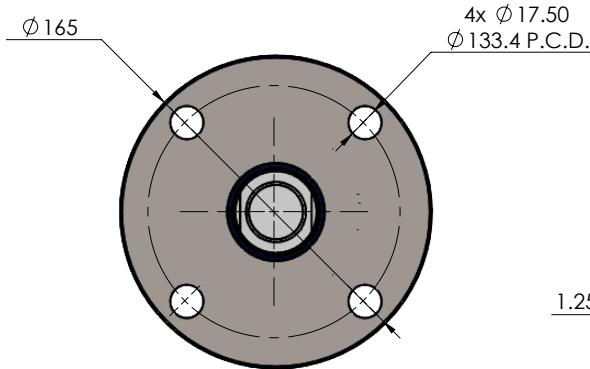
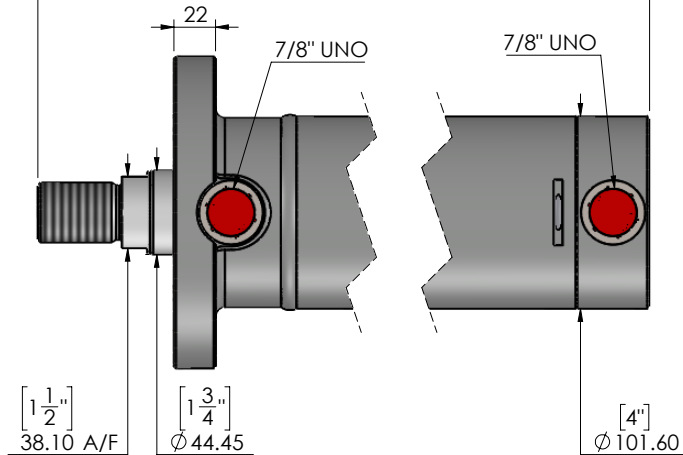
OPERATING CONDITIONS

| | |
|----------------------|--------------------|
| MAX PRESSURE | 210 BAR |
| PUSH FORCE @ 210 BAR | 13000 KG |
| PULL FORCE @ 210 BAR | 9772 KG |
| FLUID | HYDRAULIC OIL VG46 |

CYLINDER FACTOR OF SAFETY AT 210 BAR

| STRESS AREA | SAFETY FACTOR | COMMENT |
|--------------------|---------------|------------------|
| PISTON PULL OFF | 1.17:1 | |
| ROD MOUNT PULL OFF | 3.41:1 | |
| ROD BUCKLE | 5.6:1 | AT MAX EXTENSION |
| BASE MOUNT | 4.4:1 | |
| ROD MOUNT | 3.43:1 | |
| BARREL | 3.57:1 | HOOP STRESS |

CLOSED 684 / STROKE 450 MM / OPEN 1134 MM ± 3



CYLINDER SPECIFICATIONS

| | | | |
|-----------|---------------|----------|-----------------------|
| CLOSED | 684 MM | PORTS | 7/8" UNO |
| STROKE | 450 MM | BARREL | 3.50" TUBE 0.25" WALL |
| OPEN | 1134 MM | HEAD CAP | R10107 |
| STAND OUT | 28 MM | ROD CAP | R10113 |
| ROD | 1.75" - K1045 | WEIGHT | 22.7 Kg |
| BORE | 3.50" | PAINTING | REFER TO QUOTE |

CLIENT SIGNATURE

APPROVAL DATE

B

A

0

REV

DATE

DRAWN CHECKED

REMARK

SHEET OF
1/1



SHEET SIZE

A4

SCALE

1:4



CFH 35

DESCRIPTION

CFH 3.50" BORE X 0450MM STROKE X 1.75ROD-7/8UNO

PART NO.

CFH350450AC175

DWG NO.

CFH350450AC175DIM